

**DAMARALAND TREK – 3 nights / guided tour**

*EXCLUSIVITY DAMARANA*

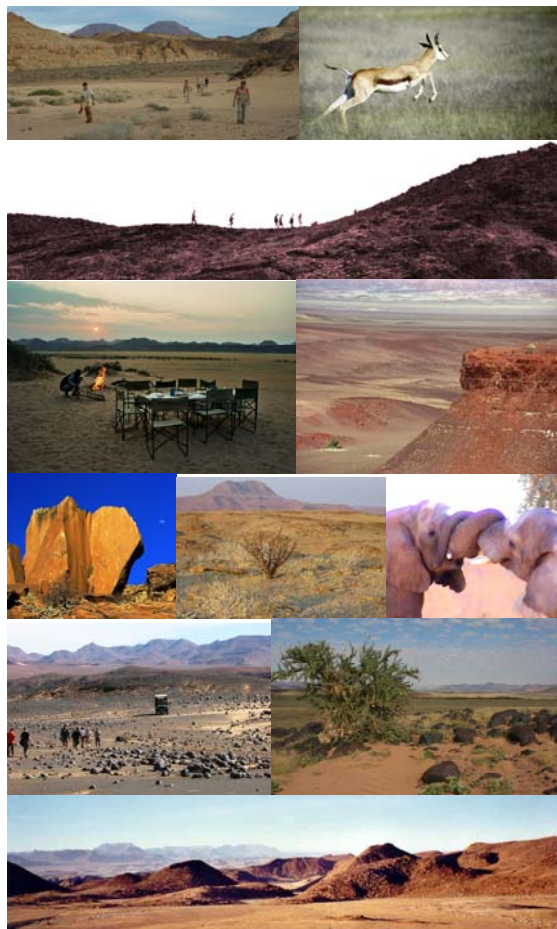
This trek has been designed for wilderness lovers! We will pick you up on day one at lunch time, from Twyfelfontein. You will enjoy an amazing trip through a large variety of landscapes between the beautiful land and rock formations typical of Damaraland: sandstones cliffs, savanna, dry river beds, basalt and dolerite. You will walk through vast open spaces, exploring the endemic flora and fauna, feel the magic of this area where remain the last wild black rhinoceros in Africa. We recommend that you stay at the luxurious lodge of MOWANI MOUNTAIN CAMP after this 3-day workout !



**Highlights**

Exclusive small group (from 2 to 8 persons), mobile tented camps (a different wild camp every night); knowledge of a qualified guide; efficient back up team (4x4 vehicle, satellite phone or HF radio).

**Days 1 to 3 - Damaraland – FB  
Guided mobile trek**



**Daily walking trail ; About 4 to 7 hours**

You will meet your guide and camp assistant in Twyfelfontein at lunch time.

*The trek will start You will be transferred in a beautiful wild camp spot. The hike will start the next morning, towards the Huab Valley, that you will reach on your last trekking day: you will learn about the endemic Fauna and flora, walking through different landscapes, from the red sandstones rocks to the luxuriant Huab River. Be aware that Desert elephants and black rhinoceros roam free in this area! These animals are very difficult to spot, but we will likely find tracks and other signs of their presence in the area.*

*The daily walks range from 15 to 25 km, on different terrains, from rocky paths to more sandy areas or open grass plains. In the morning, you will walk from 4 to 6 hours and in the afternoon, from 1 to 2 hours The afternoon walk is optional (mountain climbing to find a beautiful spot for sunset)*

*The 3 nights will be spent on wild camp spots, under dome tents and dinner under the stars. Our back up team will move the camp every day.*



**Day 4 - BB**

**End of our services. We suggest you to spend the night at MOWANI MOUNTAIN CAMP**

*We will use 4x4 vehicle for a short transfer in order to go back to Twyfelfontein. Arrival in Twyfelfontein before lunch time.*

*Code meals BB: breakfast included - FB: Full Board (breakfast, lunch & dinner included)*

**Rates on request**

**LOGISTIC**

Transfers by roads & logistic will be provided by 4x4 vehicle specifically designed for safaris.



- Additional security measure: satellite phone for treks
- Radio contact with the back up vehicle
- Qualified Tour guide
- Camp assistant
- Exclusive small group
- Wild camping in Damaraland
- Three days trek without carriage (back up vehicle)

**CONDITIONS**

**Tariff includes:**

- ✓ Accommodation as mentioned in the program – double tent, with bedrolls, pillow and duvet
- ✓ French or English speaking guide (according to availability): camp assistant & tour leader (2 persons minimum)
- ✓ Meals as mentioned in the program: Full board. During camping / trek we provide potable water but not mineral water
- ✓ Car rental based on the itinerary
- ✓ Park fees/ concession fees when necessary
- ✓ Camping material (bed rolls)
- ✓ Fuel, based on the itinerary

**Tarif excludes:**

- ✓ International, regional neither domestic flights
- ✓ Meals not included in the program.
- ✓ Tips
- ✓ Your personal medical insurance
- ✓ Drinks
- ✓ Accommodation on day 4

